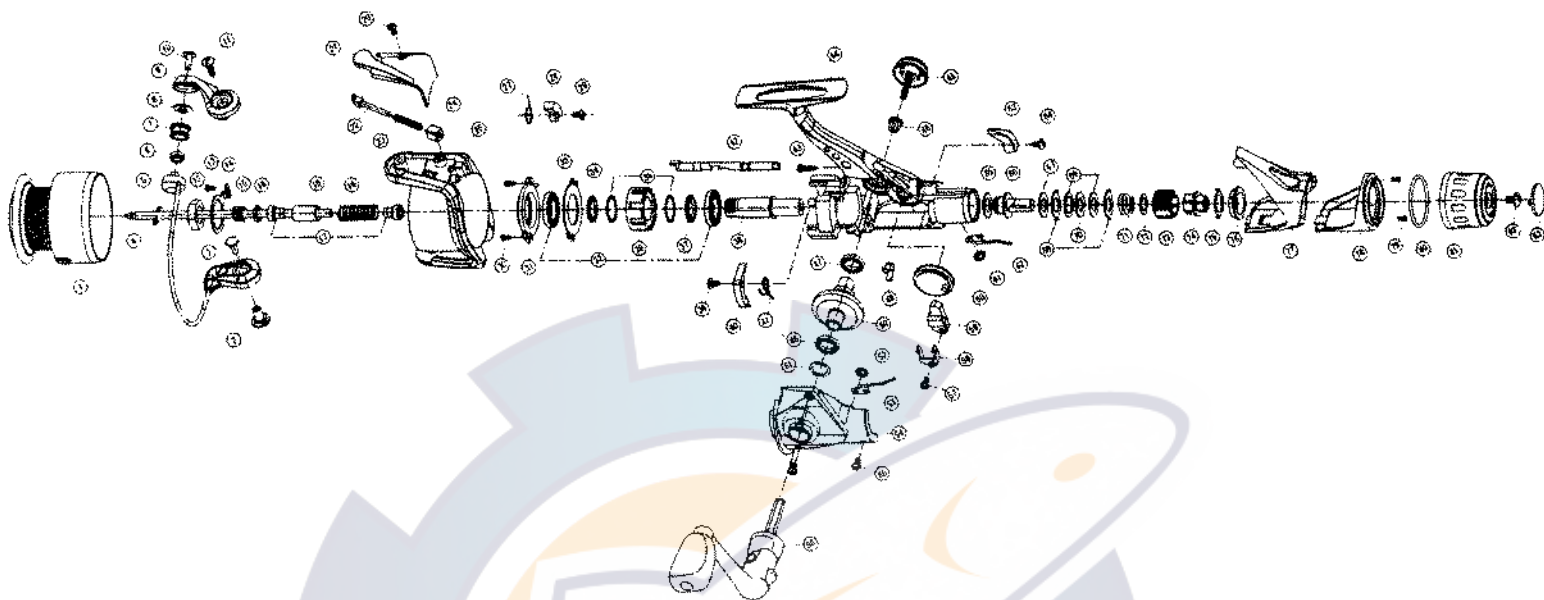


**Daiwa**  
COMMITTED TO TOTAL QUALITY  
SPINNING REEL

**LAGUNA 2550**



Key No.	Parts No.	Parts Name	Key No.	Parts No.	Parts Name
1	W38-0001	SPOOL	43	W38-4201	REAR COVER A SCREW
1	W38-0002	SPOOL (EXTRA)	44	W38-4301	BODY
2	W34-0201	BAIL HOLDER NUT	45	W34-4801	HANDLE SCREW
3	W38-0201	BAIL HOLDER SCREW	46	W34-4701	HANDLE COLLAR
4	W38-0301	MAIN SHAFT	47	W34-3601	BALL BEARING D
5	W33-7901	BAIL	48	W34-3601	BALL BEARING D
6	W33-8001	BALL BEARING A	49	W34-3901	A/R PAWL SPRING A
7	W33-8101	LINE ROLLER	50	W38-4801	DRIVE GEAR
8	W33-8201	LINE ROLLER COLLAR	51	W34-3701	DRIVE GEAR WASHER
9	W38-0801	BAIL ARM	52	W38-5001	CLICK LEAF SPRING RET
10	W38-0901	LINE ROLLER SCREW	53	W38-5101	CLICK LEAF SPRING A
11	W33-8401	BAIL ARM SCREW	54	W38-5201	SIDE COVER
12	W38-1101	ROTOR NUT	55	W38-5301	SIDE COVER SCREW
13	W33-9101	ROTOR NUT HOLD PLT SCREW	56	W38-5401	HANDLE
14	W33-9501	ROTOR NUT HOLD PLT	57	W38-5501	OSC SLIDER RET PLT SCREW
15	W38-1401	MAIN SHAFT SPRING A	58	W38-5601	OSC SLIDER RET
16	W33-9801	BALL BEARING COLLAR A	59	W38-5701	OSC SLIDER
17	W38-1601	BALL BEARING B	60	W34-2701	OSC GEAR
18	W34-0001	SPACING SLEEVE	61	W38-5001	CLICK LEAF SPRING RET
19	W33-9701	MAIN SHAFT SPRING B	62	W38-5901	CLICK LEAF SPRING B
20	W38-1901	BAIL SPRING COVER SCREW	63	W34-2401	A/R LEVER
21	W34-0301	BAIL SPRING COVER	64	W38-6101	A/R LEVER SCREW
22	W33-8701	BAIL SPRING SHAFT	65	W38-6201	DRAG METAL WASHER
23	W33-8801	BAIL SPRING	66	W38-6301	DRAG METAL A
24	W33-8901	BAIL SPRING HOLDER	67	W38-6401	DRAG WASHER A
25	W38-2401	ROTOR	68	W38-6501	EARED WASHER
27	W34-0501	BAIL TRIP LEVER SPRING	69	W38-6601	DRAG WASHER B
28	W34-0601	BAIL TRIP LEVER	70	W38-6701	KEY WASHER
29	W38-2801	BAIL TRIP LEVER SCREW	71	W38-6801	DRAG COIL SPRING
30	W38-2901	BEARING RET SCREW	72	W38-6901	DRAG SCREW WASHER
31	W34-0901	BEARING RET A	73	W38-7001	DRAG SCREW
32	W34-1701	BALL BEARING C	74	W38-7101	DRAG METAL B
33	W34-1101	BEARING RET B	75	W38-7201	DRAG COLLAR
34	W34-1201	ROLLER CLUTCH COLLAR	76	W38-7301	DRAG COVER
35	W34-1501	ROLLER CLUTCH WASHER	77	W38-7401	REAR COVER A
36	W34-1401	ROLLER CLUTCH	78	W38-7501	REAR COVER B
37	W34-1601	BALL BEARING COLLAR B	79	W38-7601	REAR COVER B SCREW
38	W38-3701	PINION GEAR	80	W38-7701	O RING
39	W38-3801	A/R PAWL SCREW	81	W38-7801	DRAG KNOB
40	W34-4501	A/R PAWL	82	W38-7901	DRAG METAL SCREW
41	W34-4401	A/R PAWL SPRING B	83	W38-8001	DRAG METAL SCREW CAP
42	W34-2001	A/R CAM			